

# Signing, Signing **COMMUNITY**

**For the next six weeks, ASL  
classes will learn signs for the  
people in their community!**



## **Community**

**Movement (repeats):** fingertips of both hands touch. Twist hands forward and back



**To Help**  
Movement: Dominant  
 hand moves up and  
 down on non-dominant  
 hand.



**Assistant**



**Firefighter**



**Police Officer**

## Doctor



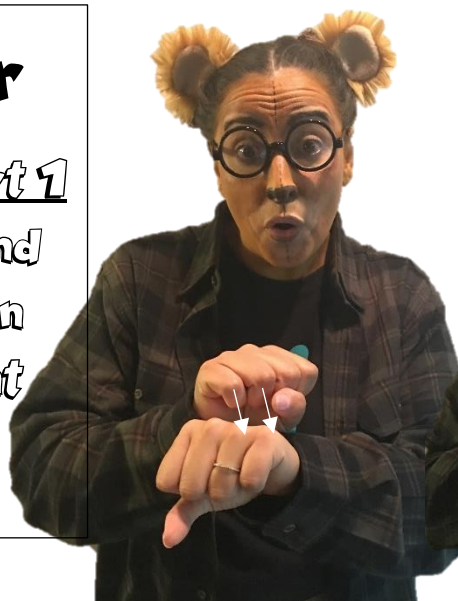
## Dentist



## Worker

### Movement Part 1

Dominant hand  
taps twice on  
non-dominant  
hand



### Movement Part 2

Both hands move  
downward



## Teacher

### Movement Part 1

Both hands move  
outward slightly  
from forehead



Movement Part 2 Both hands move outward slightly





## Park

Movement: K-  
handshape  
moves across  
forehead



## Mail

Movement: Thumb of dominant  
hand meets palm of non-dominant  
hand